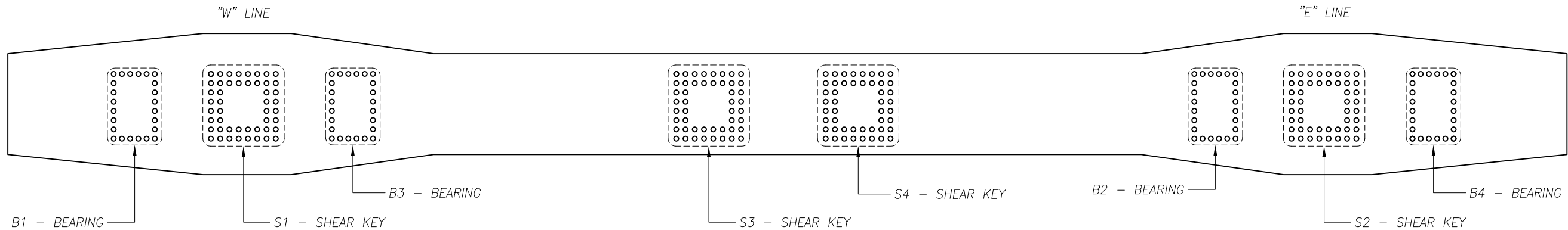


May 18, 2013 - 8:33pm C:\Documents and Settings\ksmith\Desktop\E2 Anchor Rod Failure Map REV6.dwg



E2 BEARING AND SHEAR KEY ANCHOR ROD LAYOUT
PIER E2 PLAN AT TOP OF CONCRETE

- NOTES:
- FOR GENERAL NOTES AND INFORMATION NOT SHOWN SEE SHEET DE353A OF ABF-SUB-002757R0.
 - ANCHOR ROD I.D. LOCATIONS APPLY TO ALL RODS FOR ALL BEARINGS AND SHEAR KEYS.
 - ORIENTATION OF ANCHOR ROD I.D. KEY, AND CORRESPONDING ROD I.D. IS CONSISTENT FOR ALL BEARING AND SHEAR KEY ANCHOR ROD PATTERNS.
 - A REFERENCE MARK IS PROVIDED FOR GENERAL ORIENTATION OF THE ANCHOR ROD. THE REFERENCE MARK LOCATION MAY VARY SLIGHTLY FROM THE ORIENTATION AT FAILURE DUE TO ROTATION OF THE ROD AS IT WAS PULLED UP THROUGH THE HOLE.
 - ON 03-14-13, THE TENSION IN SHEAR KEY S1 RODS WAS REDUCED BY JACKING TO 0.45Fy (307kips) AFTER SEATING LOSSES. ROD A2 BROKE AT ABOUT 12:15pm PRIOR TO JACKING OPERATIONS. ROD B2 BROKE DURING JACKING AT ABOUT 612kips (19,000psi).
 - ON 03-15-13, THE TENSION IN SHEAR KEY S2 RODS WAS REDUCED BY JACKING TO 0.45Fy (307kips) AFTER SEATING LOSSES. ROD A8 BROKE DURING JACKING AT ABOUT 547kips (17,000psi).

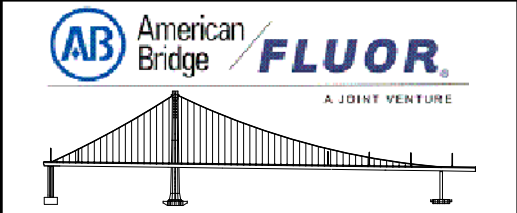
- CURRENT STRESSING STATUS (AS OF 3-15-2013):
- FINAL TENSIONING ON ALL RODS:
S1 SHEAR KEY (03-02-13, COLUMNS B-G, AND 03-05-13, COLUMNS A AND H)
S2 SHEAR KEY (03-01-13, ALL COLUMNS)
 - TENSION REDUCTION TO 0.45Fy (307kips) AFTER SEATING LOSSES:
S1 SHEAR KEY (03-14-13, TENSION IN ALL UNBROKEN RODS WAS REDUCED EXCEPT FOR G6 AND H5 WHICH WERE RELEASED ON 03-15-13)
S2 SHEAR KEY (03-15-13, TENSION IN ALL UNBROKEN RODS WAS REDUCED EXCEPT FOR H1 WHICH COULD NOT BE RELEASED WITH THE JACKING EQUIPMENT)
 - ALL REMAINING BEARINGS (B1-B4) AND SHEAR KEYS (S3-S4) HAVE BEEN STRESSED.

FOR INFORMATION

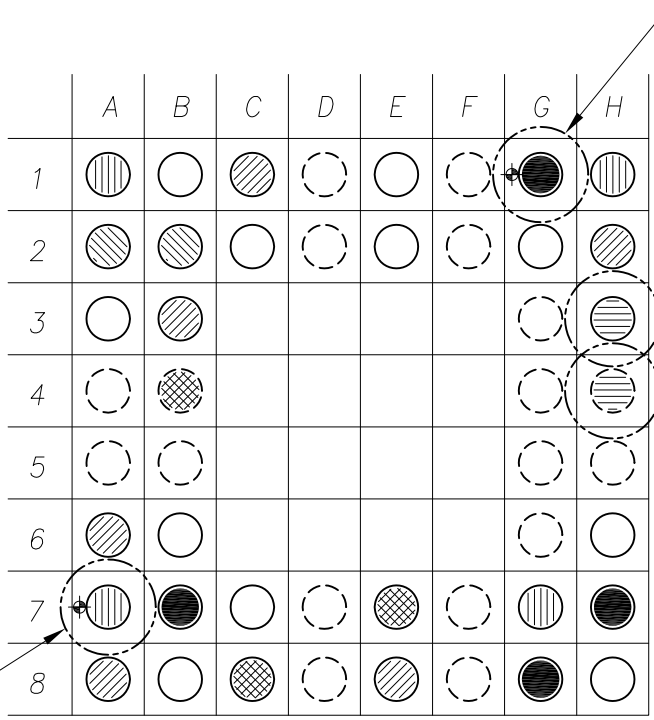
STATE OF CALIFORNIA DEPARTMENT OF TRANSPORTATION CONTRACT NO. 04-0120F4 BRIDGE NO. 34-0006L/R			
DISTRICT 04	COUNTY SF	ROUTE 80	KILOMETER POST 13.2 / 13.9

SAN FRANCISCO OAKLAND BAY BRIDGE
EAST SPAN SEISMIC SAFETY PROJECT
SELF ANCHORED SUSPENSION BRIDGE
(SUPERSTRUCTURE AND TOWER)

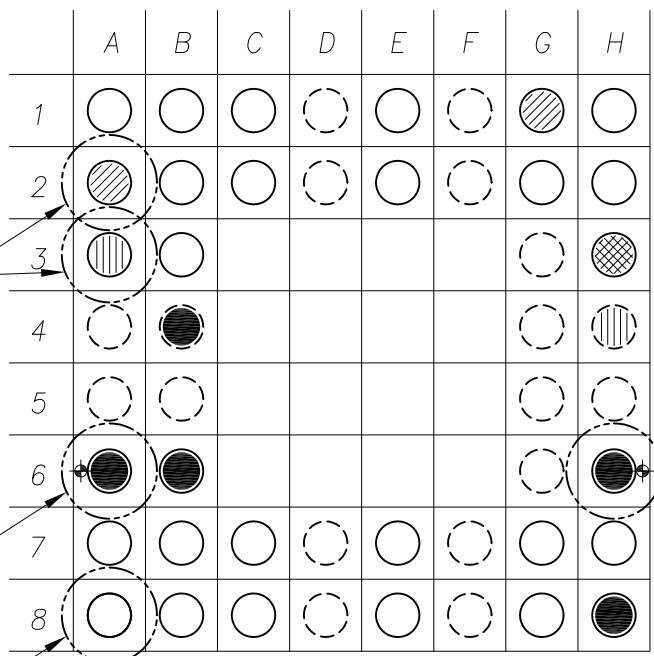
E2 BEARING AND SHEAR KEY
ERECTION PLAN: ANCHOR ROD STRESSING
ANCHOR ROD FAILURE MAP



Design By:	Date:
Design Chk:	Date:
Drawn By: Z. LAURIA	Date: 3/11/13
Drawing Chk: K. SMITH	Date: 3/11/13
In Charge Of: R. KICK	
Job No. 660110	Sheet No. SK-20130311
Scale: NTS	Revision: 6



S1 - SHEAR KEY ROD FAILURE MAP
(21 OF 48)
PLAN VIEW (LOOKING DOWN)



S2 - SHEAR KEY ROD FAILURE MAP
(11 OF 48)
PLAN VIEW (LOOKING DOWN)

LEGEND

ANCHOR ROD LENGTH	DATE ROD BREAK DISCOVERED
ANCHOR ROD LENGTH = 17'-2 1/8"	3/08/13
ANCHOR ROD LENGTH = 9'-11 1/2"	3/09/13
REFERENCE MARK LOCATION (SEE NOTE 4)	3/11/13
	3/12/13
	3/13/13
	3/14/13 (SEE NOTE 5)
	3/15/13 (SEE NOTE 6)

6	05/18/13	KMS	ABR		05/18/13 UPDATE, EXTRACTED RODS LABELED
5	03/15/13	KMS			03/15/13 UPDATE, S2 ROD TENSION REDUCED
4	03/14/13	KMS			03/14/13 UPDATE, S1 ROD TENSION REDUCED
3	03/13/13	KMS			03/13/13 UPDATE
2	03/12/13	ECB			03/12/13 UPDATE
1	03/11/13	ECB			03/11/13 UPDATE
REV	DATE	DWG BY	DWG CHK	DSGN BY	DSGN CHK

